

1670.3 APR 23 1978
Revision 5
02/13/78

THREE MILE ISLAND NUCLEAR STATION
STATION HEALTH PHYSICS PROCEDURE 1670.3
EMERGENCY PLAN, VOLUME 1
EMERGENCY PROCEDURE - GENERAL EMERGENCY PROCEDURE

CENTRAL FILE

Table of Effective Pages

CONTROLLED COPY

Page	Date	Revision	Page	Date	Revision	Page	Date	Revision
1.0	02/13/78	6	26.0			51.0		
2.0	02/13/78	5	27.0			52.0		
3.0	02/13/78	6	28.0			53.0		
4.0	02/13/78	6	29.0			54.0		
5.0	02/13/78	6	30.0			55.0		
6.0	02/13/78	6	31.0			56.0		
7.0			32.0			57.0		
8.0			33.0			58.0		
9.0			34.0			59.0		
10.0			35.0			60.0		
11.0			36.0			61.0		
12.0			37.0			62.0		
13.0			38.0			63.0		
14.0			39.0			64.0		
15.0			40.0			65.0		
16.0			41.0			66.0		
17.0			42.0			67.0		
18.0			43.0			68.0		
19.0			44.0			69.0		
20.0			45.0			70.0		
21.0			46.0			71.0		
22.0			47.0			72.0		
23.0			48.0			73.0		
24.0			49.0			74.0		
25.0			50.0			75.0		

Unit 1 Staff Recommends Approval

Approval N/A Date —
Cognizant Dept. Head

Unit 2 Staff Recommends Approval

Approval N/A Date —
Cognizant Dept. Head

Unit 1 PORC Recommends Approval

H. Kander Date 2/15/78
Chairman of PORC

Unit 2 PORC Recommends Approval

V. Shihadeh Date 2.15.78
Chairman of PORC

Unit 1 Superintendent Approval

J. P. Anderson Date 2/15/78

Unit 2 Superintendent Approval

J. H. DeLongis Date 2/13/78

Manager Generation Quality Assurance Approval

N/A Date 2/15/78

THREE MILE ISLAND NUCLEAR STATION
STATION HEALTH PHYSICS PROCEDURE 1670.3

EMERGENCY PLAN, VOLUME 1

EMERGENCY PROCEDURE - GENERAL EMERGENCY PROCEDURE

1.0 DISCUSSION

A General Emergency is an occurrence with definite off-site protective actions required to minimize the off-site radiological dose. In addition to the off-site responses, it may be necessary to evacuate personnel. Off-site agencies will be involved extensively for both assessment and protective actions.

2.0 OBJECTIVE

To outline specific actions required in the event of a General Emergency.

3.0 EMERGENCY ACTION LEVELS

3.1 Reactor Building high range gamma radiation monitor indicates >8 R/hr.

3.2 Radiation levels at the site boundary are >125 mR/hr.

3.3 The liquid effluent radiation monitor indicates $>6.8 \times 10^{-3}$ $\mu\text{Ci/cc}$.

3.4 Off-site projected doses down wind from the site boundary are >25 Rem thyroid and/or 5 Rem whole body.

4.0 IMMEDIATE ACTION

4.1 Emergency Director (Station Superintendent)

4.1.1 The initial actions and responsibilities are delineated as in the Site Emergency Procedure (1670.2).

4.1.2 Declare a General Emergency when any or all emergency action levels listed in 3.0 exist.

- 4.1.3 Contact off-site support groups as required.
- 4.1.4 The State of Pennsylvania Radiation Protection Guide values for probable evacuation of LPZ are greater than 5 Rem whole body or greater than 25 Rem to the thyroid avoidable by protective action.
- 4.1.5 In the event Three Mile Island and/or off-site agency monitoring teams project that the off-site radiation doses to the public exceed doses outlined in the State of Pennsylvania Radiation Emergency Plan (Enclosure 1), recommend to State of Pennsylvania representatives that affected portions of the Low Population Zone be evacuated.
- 4.1.6 Request the Civil Defense Duty Officer to ensure air, rail and coast guard authorities are notified to prevent transport vehicles from entering the affected area.
- 4.1.7 In the event the Bureau of Radiological Health cannot be contacted and the situation required immediate protective action, the Station Superintendent/Senior Unit Superintendent, will recommend to County Civil Defense to immediately evacuate the affected area.
- 4.2 Duties of the following personnel during a General Emergency are outlined in the Site Emergency Procedure.
 - 4.2.1 Accident Assessment Personnel
 - a. Shift Supervisor
 - b. Shift Foreman
 - c. Supervisor of Operations

- d. Nuclear Engineer
 - e. Supervisor Radiation Protection and Chemistry
 - f. Radiation Protection Supervisor
 - g. Chemical Supervisor
 - h. Lead Engineers
- 4.2.2 Radiation Monitoring Teams
 - 4.2.3 Repair Party Team
 - 4.2.4 Operations Personnel
 - 4.2.5 Security Personnel

1670.3
Revision 6
02/13/78

FIGURE 2

EMERGENCY STATUS BOARD

PENNA. BUREAU OF RAD. HEALTH QUESTIONS

1. WHAT TYPE ACCIDENT HAS OCCURRED?
2. HAS THE REACTOR TRIPPED?
3. DID THE EMERGENCY SAFEGUARDS SYSTEMS ACTUATE?
IF SO, WHICH ONE?
 - a. HIGH PRESSURE INJECTION YES ☐ NO ☐
 - b. LOW PRESSURE INJECTION YES ☐ NO ☐
 - c. CORE FLOOD YES ☐ NO ☐
 - d. REACTOR BUILDUP ISOLATION YES ☐ NO ☐
 - e. REACTOR BUILDUP COOLING YES ☐ NO ☐
4. WHAT IS THE STATUS OF THE PLANT?
 - a. AT POWER
 - b. HOT STANDBY
 - c. F OF SHUTDOWN
 - d. COLDING DOWN
 - e. COLD SHUTDOWN
5. IS OFF SITE POWER AVAILABLE?
6. ARE THE DISSEL GENERATORS OPERABLE?
7. WHAT IS THE APPROXIMATE RADIOACTIVE DISCHARGE RATE FROM THE PLANT?
 - a. IODINE GASES _____ CI/SEC
 - b. IODINES _____ CI/SEC
8. WHAT IS APPROXIMATE WIND SPEED AND DIRECTION?
9. WHAT IS THE APPROXIMATE DOSE RATE TO THE PUBLIC?
10. IS EVACUATION OF DOWNWIND AREAS RECOMMENDED?
11. HAVE ANY PERSONNEL INJURIES OCCURRED? IF SO, WHAT ACTION HAS BEEN TAKEN? WHAT ARE APPROXIMATE RADIATION AND/OR CONTAMINATION LEVELS?
12. ESTIMATED TIME OF RELEASE _____

Radiation Monitoring Survey

Area monitor readings

Liquid monitor readings

Air monitor readings

ADDITIONAL INFORMATION

POOR ORIGINAL

190 010

APR 23 1979

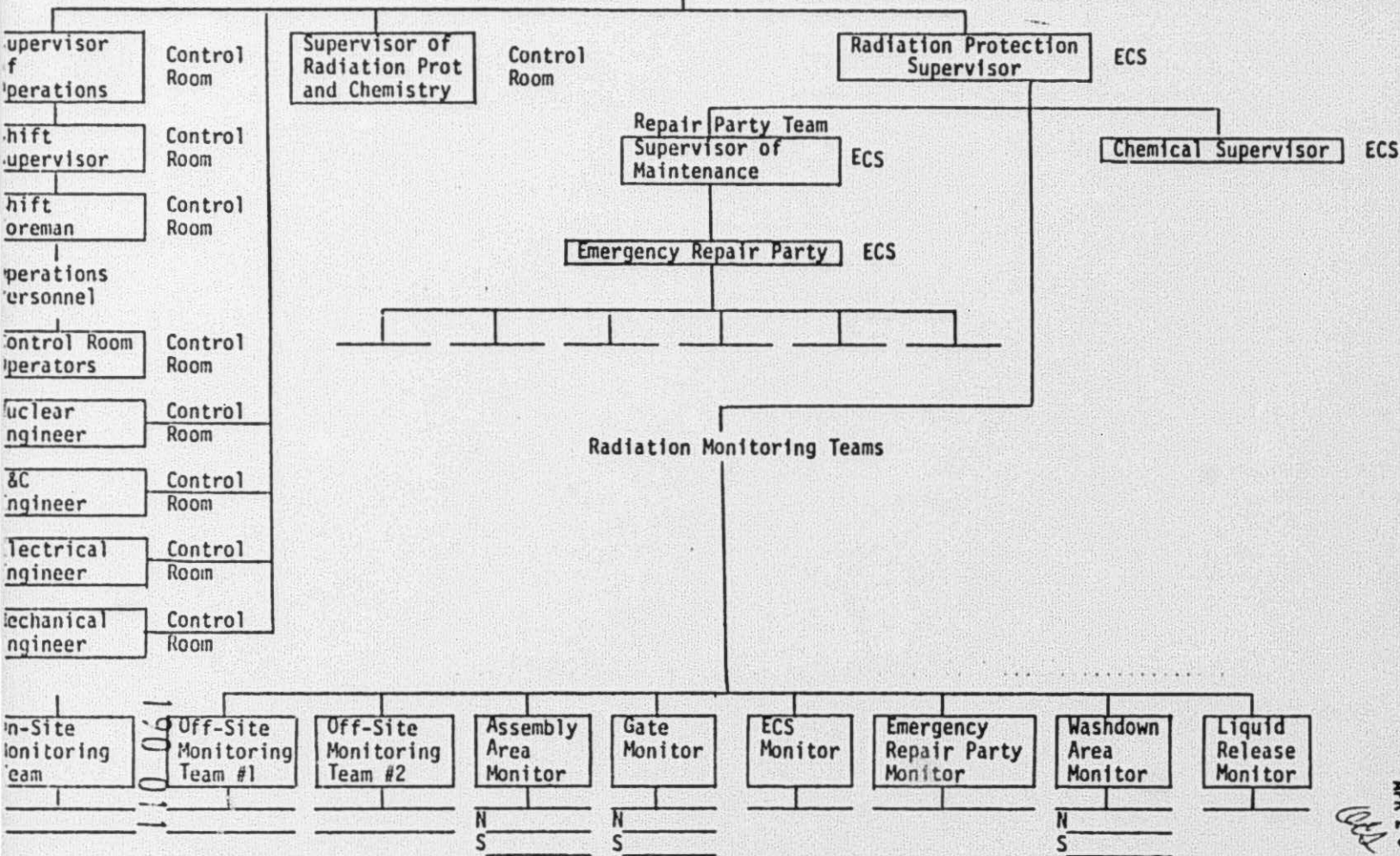
1620.3
K. sion 6
02/13/78

Control Room

- Security Personnel

Site Protection Sergeant

North
Auditorium



APR 20 1973

PROTECTIVE ACTION LEVELS DEFINED WITHIN THE COMMONWEALTH OF PENNSYLVANIA RADIATION EMERGENCY PLAN ARE AS FOLLOWS:

<u>CLASSIFICATION</u>	<u>WHOLE BODY DOSE</u>	<u>or a</u>	<u>THYROID DOSE</u>	<u>ACTION</u>
Protection Action Guide I	<.5 Rem		<3 Rem	a. Increased Radiological environmental surveillance will be conducted. b. Eating and drinking local foods and water will be controlled. c. Control of access to affected area will be maintained.
Protection Action Guide II	greater than .5 Rem but less than 5 Rem	or a	greater than 3 but less than 25 Rem	a. Direction to the public to take over will be initiated. b. Possible evacuation of selected individuals may be conducted.
Protection Action Guide III	greater than 5 Rem	or a	greater than 25 Rem	a. Actions planned include increased Rad. Env. surveillance. b. Probable evacuation of high risk individuals. (i.e., those in poor health and more susceptible to effects of radiation) and probable evacuation of general population in the affected area.

190 012

1670.3 AFR 2.3 8/78
Revision 6
02/13/78
CJH

TMI DOCUMENTS

DOCUMENT NO: TM-010

COPY MADE ON 5/3/79 OF DOCUMENT PROVIDED BY
METROPOLITAN EDISON COMPANY.

WRM
Wilda R. Mullinix, NRC

7906140155